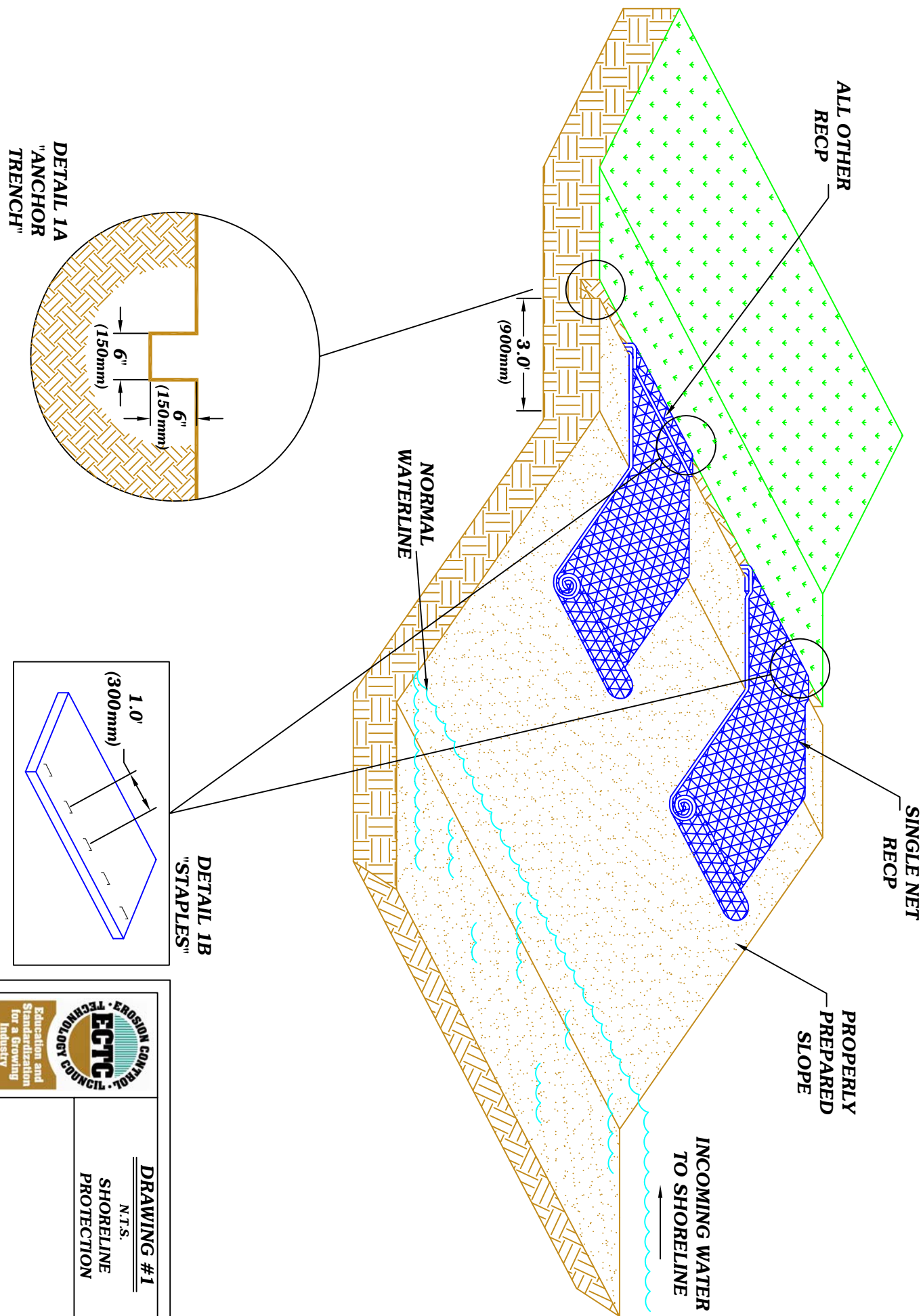



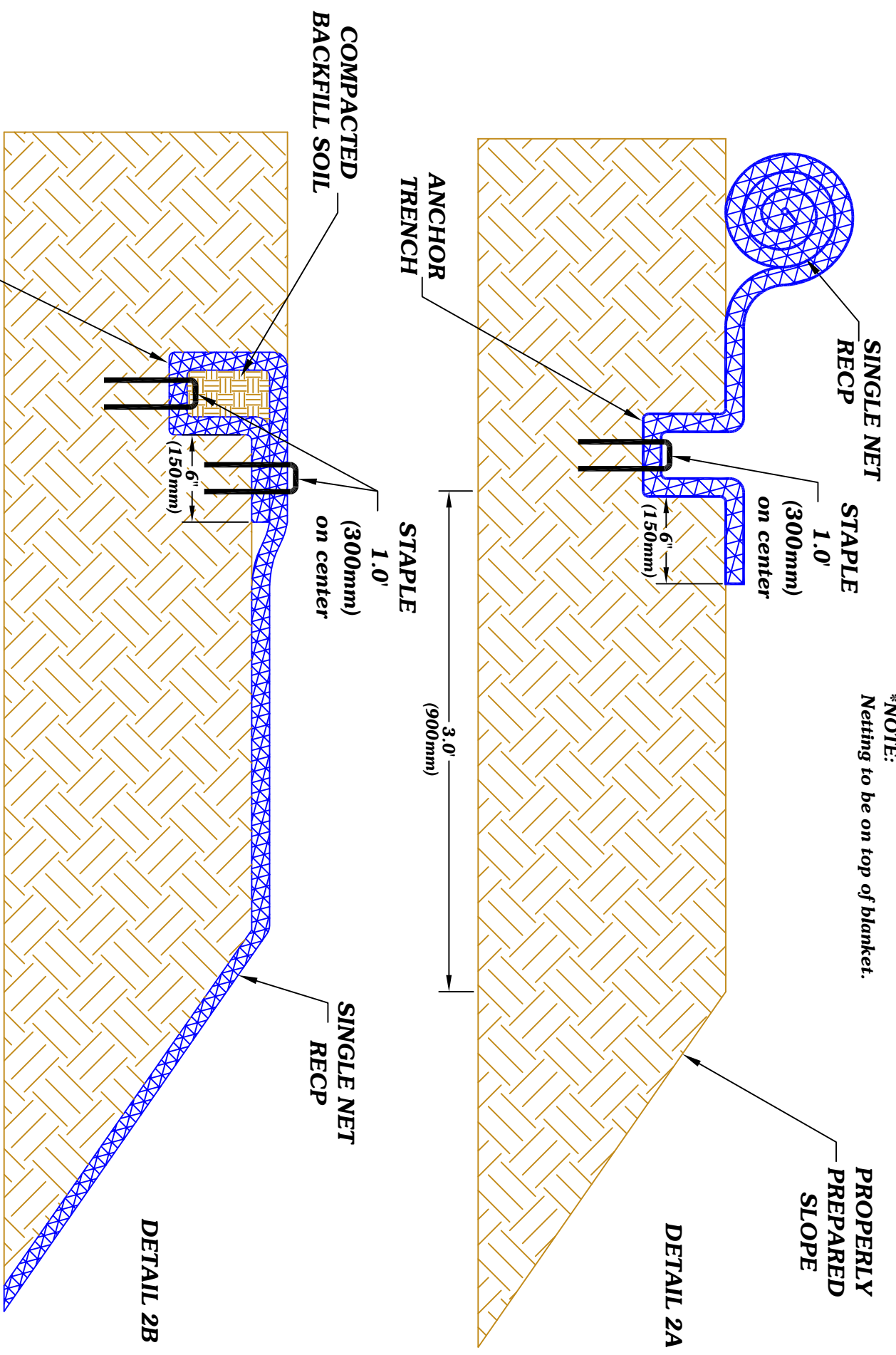
**\*NOTE:**  
Install the RECPs 3ft. (900mm) beyond the shoulders of the slope onto flat final grade. Secure roll end with a single row of staples on 1 ft. (300mm) centers.

For further information please refer to ECTC Installation Guidelines



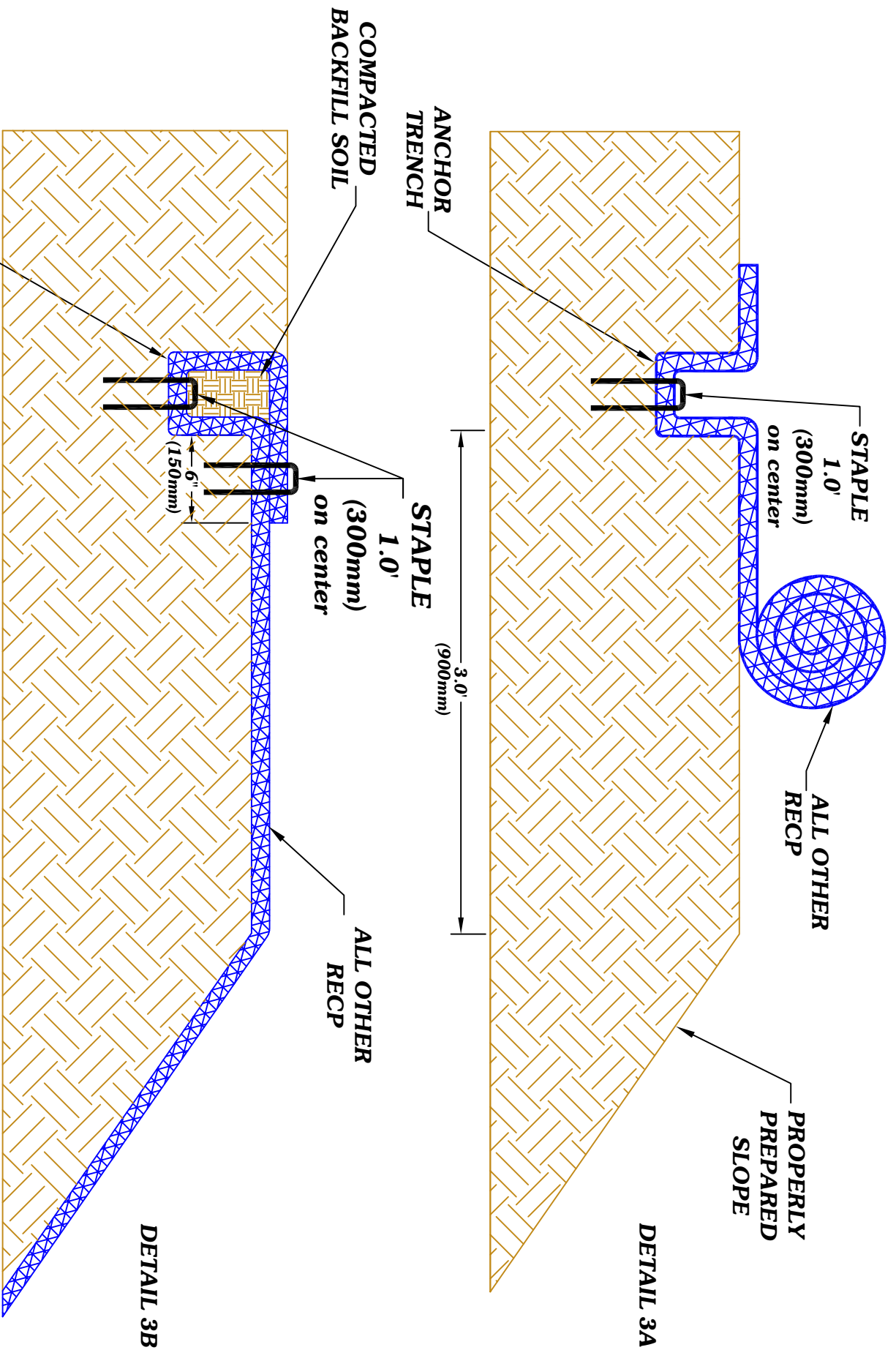
	<b>DRAWING #1</b> N.T.S. <b>SHORELINE PROTECTION</b>
--	--

**\*NOTE:**  
 Netting to be on top of blanket.




For further information please refer to ECTC Installation Guidelines

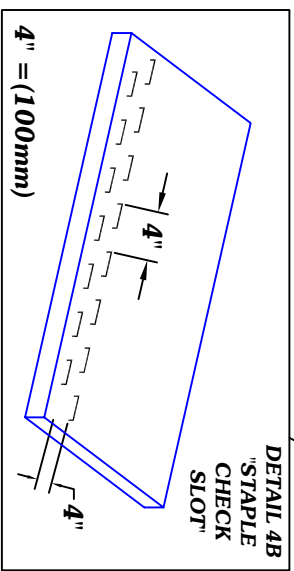
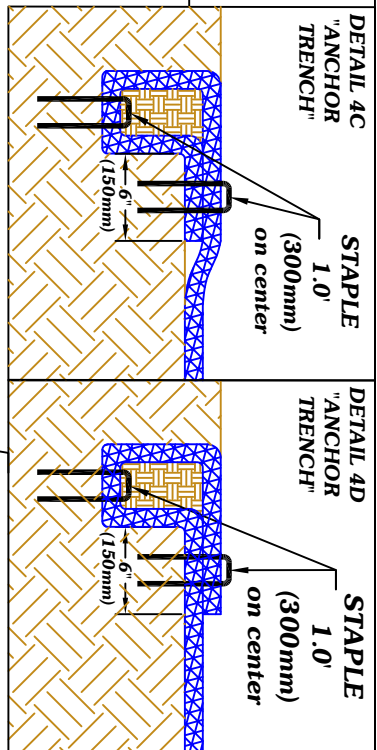
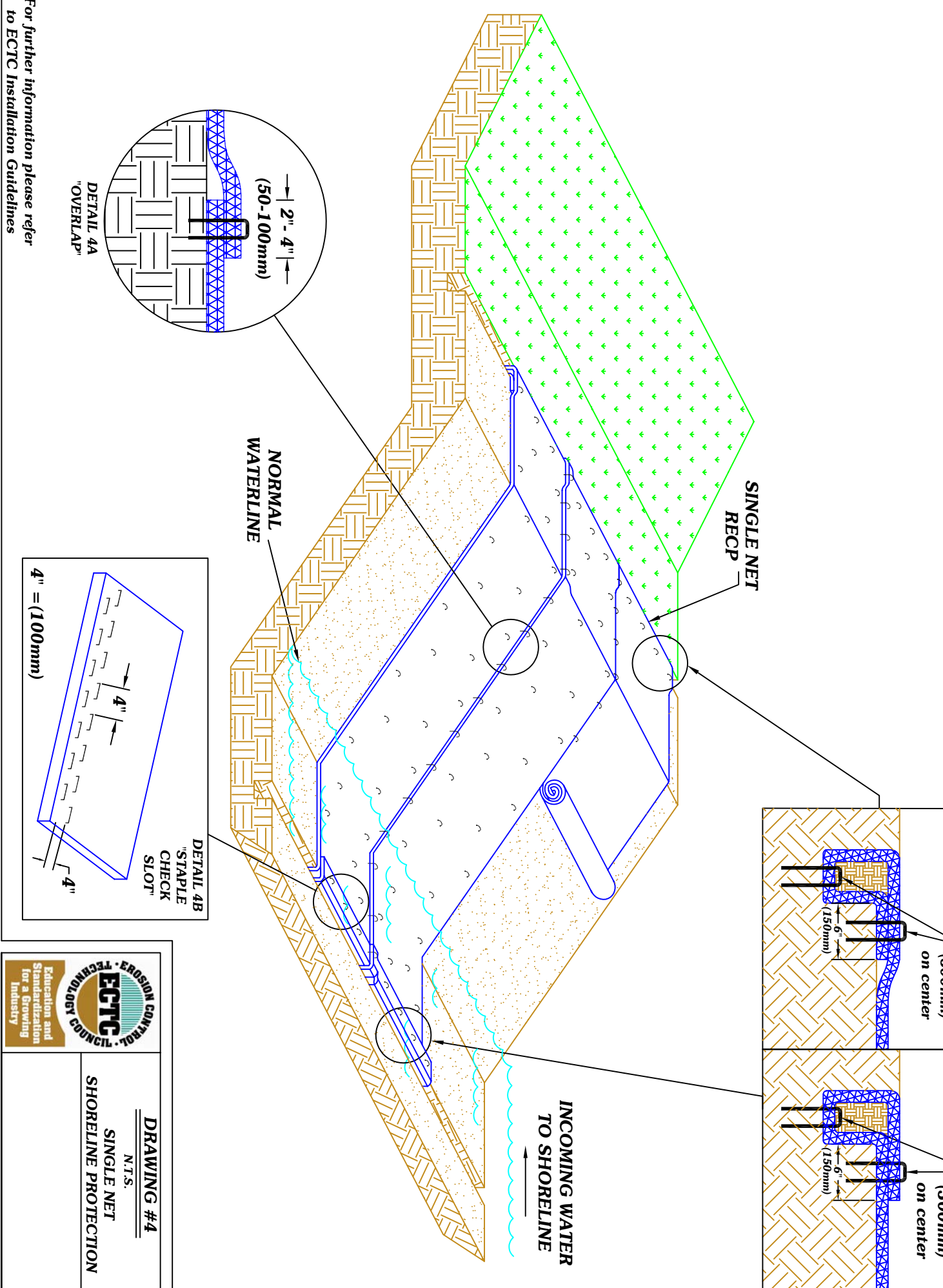
	<b>DRAWING #2</b> N.T.S. <b>RECP SHORELINE PROTECTION</b>



For further information please refer to ECTC Installation Guidelines

	<p><b>DRAWING #3</b></p>
	<p>N.T.S. RECP SHORELINE PROTECTION</p>

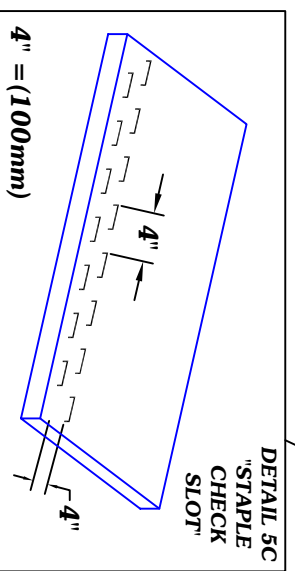
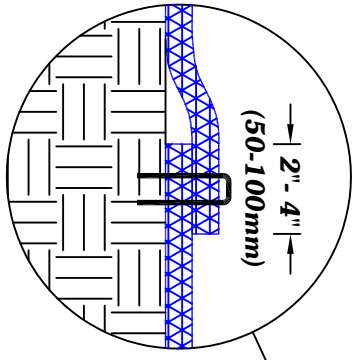
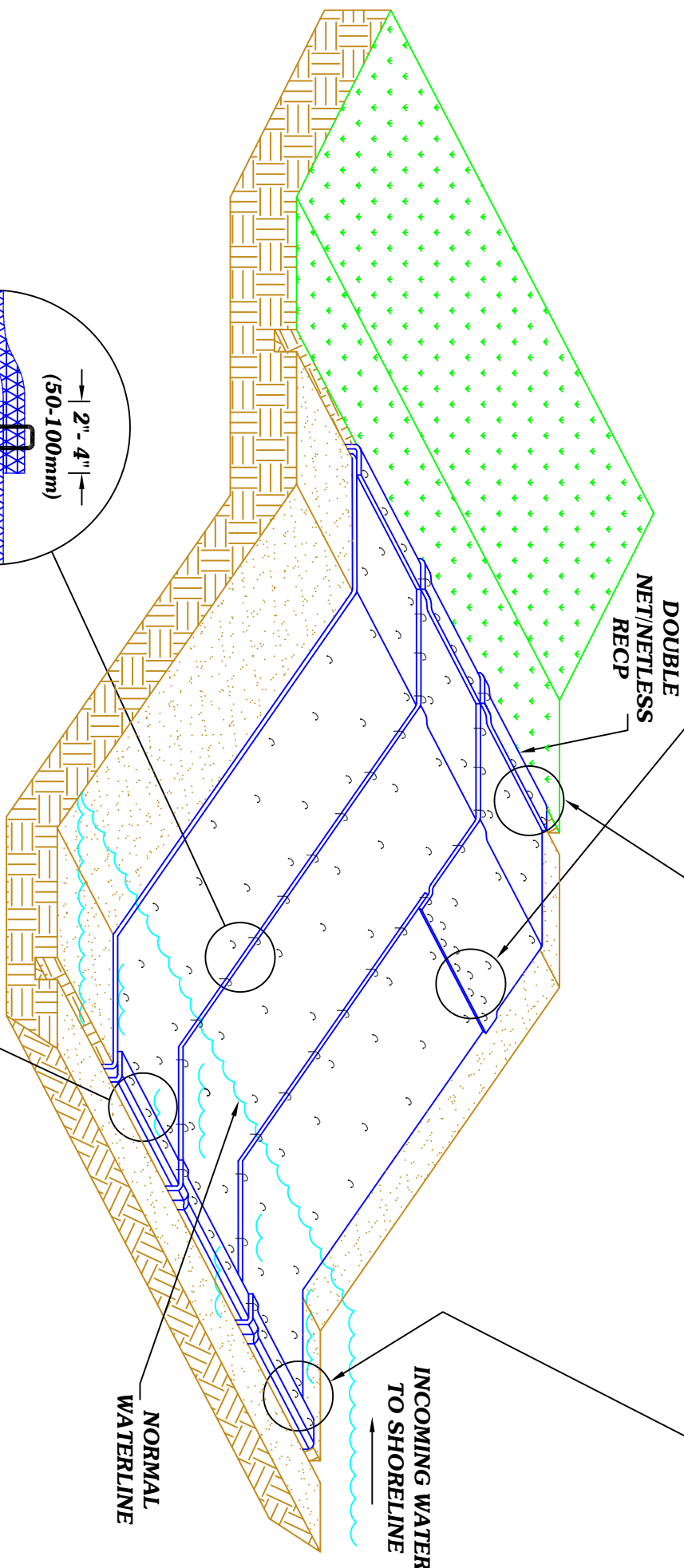
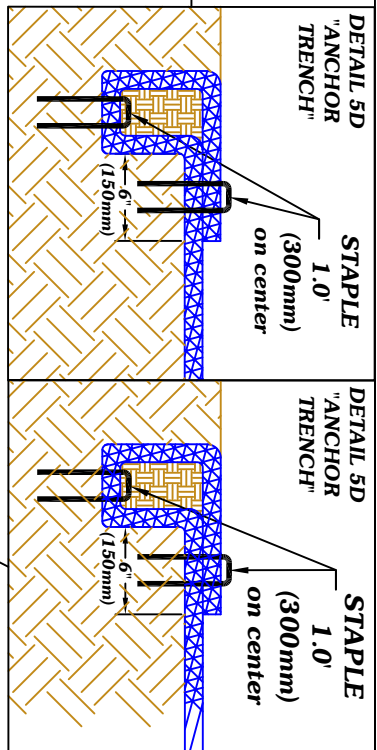
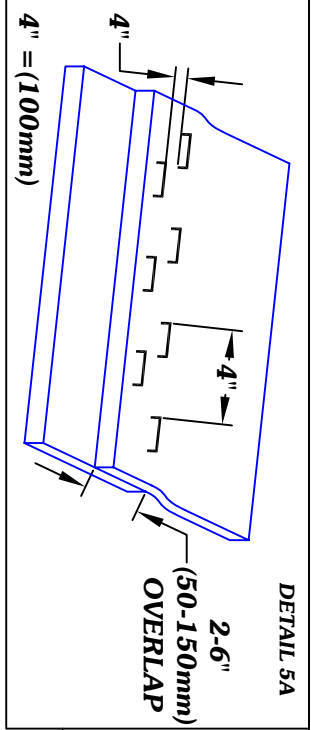
**\*NOTE:**  
Use manufacturer's recommended staple pattern.



**EROSION CONTROL TECHNOLOGY**  
**ECTC**  
Education and Standardization for a Growing Industry

**DRAWING #4**  
N.T.S.  
**SINGLE NET SHORELINE PROTECTION**

For further information please refer to ECTC Installation Guidelines



For further information please refer to ECTC Installation Guidelines

**DRAWING #5**  
N.T.S.  
**DOUBLE NET/NETLESS SHORELINE PROTECTION**